

Parents' and Carers' Evening

Parents' and Carers' evening is scheduled for **Friday 3rd May 2024, from 6:15 pm - 8:15 pm.** This is an excellent opportunity for you to discuss your child's progress and learn about their achievements in the nursery. You will also get to meet their key person and plan your child's next learning and development steps with them.

If your child attends full-time or during afternoon hours, the latest pick-up time for Friday 3rd May 2023 will be 06:00 pm.

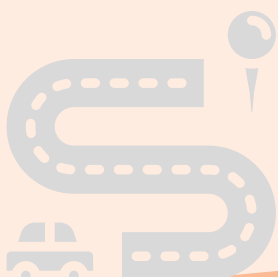
We welcome parents and carers to the premises from 6:15 pm onwards. Our staff will be available to communicate with you during the event.

Important dates

- **3rd May 2024, Parents' and Carers' Evening.**
- **6th May 2024, Bank Holiday.** The Nursery will remain closed to everyone.
- **27th May 2024, Bank Holiday.** The Nursery will remain closed to everyone.
- **From 28th - 31st May 2024,** it is half term and the nursery will remain closed to children who attend term time only hours.

Theme of the term

- The theme for this term, is **Transport.**



April birthdays

A very happy birthday to:

- Kaliyah
- Willow
- Taha
- Jaime



This month in the nursery

At the nursery this month, the children have been learning about various modes of transportation and how people commute from one place to another.

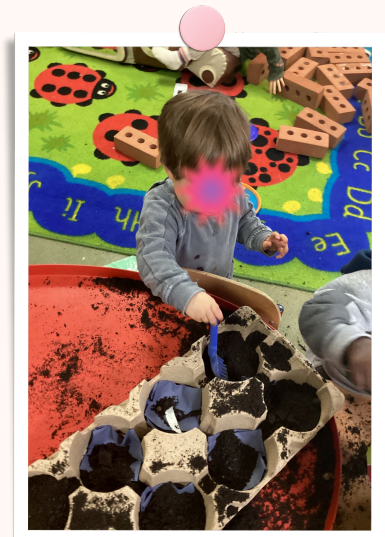
The preschoolers have been encouraged to explain a trip in which they have to use multiple means of transportation, such as buses, cars, lorries, ships, trucks, airships, trains, and vans.

In the upcoming weeks, children will have the opportunity to participate in fun and engaging learning activities focused on teaching them about the green cross code and road safety.

Recently, we celebrated St. George's Day and learned about the life of St. George. He was a soldier who lived hundreds of years ago and dedicated himself to protecting people and doing good things.



The children in the Butterfly Room at the nursery have been participating in some fun planting activities this month. They have been learning about the process of planting and growing plants, including what plants need to grow, the different stages of growth, and how to grow fruits and vegetables. The older children were also encouraged to learn new words related to gardening such as soil, sunlight, space to grow, watering can, plant pot, and seeds, which helped expand their vocabulary.



Children were encouraged to work in small groups and develop their teamwork skills. They were also urged to explore various activities and interact confidently with their friends while playing. Teamwork helps children learn to work together and teaches them communication, problem-solving, and cooperation skills that will be beneficial throughout their lives.



Photoshoot at the nursery

Thank you to all the children who participated in the nursery's photo shoot. They were all clever and did so well!

Behind the scenes...!



Nursery menus

We would like to inform all parents and carers that starting from the first week of May, we will be using our Spring/Summer menus. These menus will be rotated every week, on a four-week basis.

If you would like a hard copy of the menus, please do not hesitate to ask us.

Food banks / If you need help with food

What food banks are?

Food banks are non-profit organizations that provide food parcels to individuals and families in crisis who are struggling to afford food.

The Trussell Trust food bank offers three days of emergency food and support to those in need. Referrals to a Trussell Trust food bank are made by frontline care professionals such as doctors, health visitors, social workers, welfare officers, the police, and probation officers.

If someone is going through a difficult time and needs help with food, they can receive a food voucher by contacting the appropriate agencies. However, to access the food bank, they must have a referral from one of these agencies.

For further details, please refer to the following link:

<https://www.walthamforest.gov.uk/adult-social-care/help-managing-home/food-and-drink>.

Goodbyes

This month we said goodbye and good luck to the nursery's practitioner Ms. Lorena.

New staff



Ms. Adelene
Nursery Practitioner



Ms Amna
Nursery Assistant

Safeguarding / Domestic abuse

Domestic abuse can take place as a single event or can happen repeatedly over time. Children and young people can be victims of domestic abuse in various ways, such as being present in the room next door and hearing the abuse, or seeing their mother's physical injuries after an incident of violence.

All children and young people affected by domestic abuse are emotionally abused. It is natural for them to feel a wide range of emotions.

Does your family member, partner or carer hurt, threaten, or try to control you?

This can include different forms of abuse, such as psychological, physical, sexual, financial, or emotional abuse. It also includes forced marriage, honour-based violence, or female genital mutilation.

If you need to talk about your experience, seek refuge accommodation or access other support services, call the National Domestic Abuse Helpline.

The helpline is available 24/7, and you can call **0808 2000 247**. If you are in immediate danger, please call **999**.

Contact us

Tel:

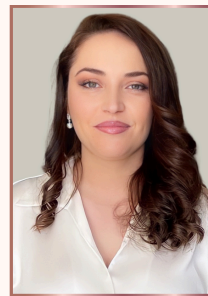
020 8617 1819

Email:

manager@brightstardaynursery.co.uk

Ofsted registration number -
2553559

DSL on site



Ms Nefeli
Nursery Manager



Ms Kelly
Nursery Deputy
Manager

Please do not hesitate to contact us with any safeguarding concerns.