

## Good luck!

We said goodbye to all the nursery's school leavers this month!

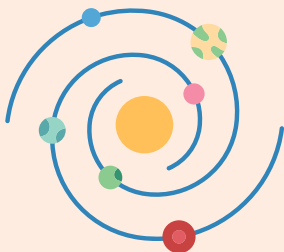
We want to thank all the Parents and Carers for attending the graduation ceremony. It was such a beautiful moment to see all the school leavers participate in the nursery's graduation ceremony and to be ready to go to school.

## Important dates

- **2nd September 2024**, funded children will be returning to the nursery.
- **28th October 2024**, INSET Day. The nursery will remain closed to everyone.

### Theme of the term

- The theme for this term is **Space and Summer**.



### July birthdays

A very happy birthday to:

- Alarah
- Aria
- Elizabeth
- Milana
- Pavlo





## This month in the nursery

This month in the nursery, children have been enjoying the lovely summer weather. They have been focusing on summer activities such as reading beautiful summer stories in the nursery's garden and playing with water and messy play.

The pre-school children have also learned that summer is one of the four seasons and that in the UK, the summer months are June, July, and August. They have learned that there are more hours of sunlight during summer, so it gets lighter earlier in the mornings and stays lighter for longer in the evenings.

Pre-school children were also taught about the meaning of self-care, including putting on sun cream and drinking lots of water.

Practitioners have also been giving the children the opportunity to practice their narrative skills and to discuss their favorite summer activities.





## Key person approach

The key person is a designated individual in a childcare setting responsible for collaborating with parents and carers to address the unique needs of each child.

They take the time to understand your child's preferences and daily routines, and they are the primary point of contact for sharing information about your child's activities and learning progress during the session.

The key person works closely with parents and carers to ensure consistency in the child's care, thereby supporting the child's emotional well-being.

They also strive to build a strong relationship between the nursery and home, fostering a connection with parents and carers.

Additionally, the key person contributes to educational planning to ensure that all activities are inclusive and tailored to each child's individual needs, considering their cultural background, potential learning disabilities, and dietary requirements.

If you are uncertain about who your child's key person is, please confirm with your child's room.

## Parents reminders

Please remember the following guidelines for the nursery:

- No mobile phones or cameras are allowed in the nursery premises. Please store these away before entering.
- Kindly label your child's clothing.
- Crocs and open toe sandals are not permitted in the nursery due to safety reasons. Closed ankle-strap sandals are allowed.
- Inform the nursery office in case of any absences or late arrivals.
- If you need assistance with Parents Zone access, please contact the office at [manager@brightstardaynursery.co.uk](mailto:manager@brightstardaynursery.co.uk).
- Send any emails related to your child and the nursery only to [manager@brightstardaynursery.co.uk](mailto:manager@brightstardaynursery.co.uk).
- For invoicing matters, reply to the same email from which you received the invoice.





# Safeguarding / Child Protection

As a parent, carer, or anyone in contact with children and families, you might occasionally have concerns about a child's well-being. These concerns could relate to their development, appearance, or behaviour, which may indicate signs of abuse.

If you believe that a child or young person is in immediate danger, it should be reported promptly to the police by calling 999 for emergency assistance. If you have non-urgent concerns about a child, you can and should contact the nursery's Designated Safeguarding Leads (DSL).

Types of child abuse:

- Sexual
- Physical
- Emotional
- Neglect
- Domestic



## DSL on site



Ms Nefeli  
Nursery Manager



Ms Kelly  
Nursery Deputy  
Manager

## Contact us



**Tel:**  
020 8617 1819

**Email:**  
[manager@brightstardaynursery.co.uk](mailto:manager@brightstardaynursery.co.uk)

Ofsted registration number -  
2553559